

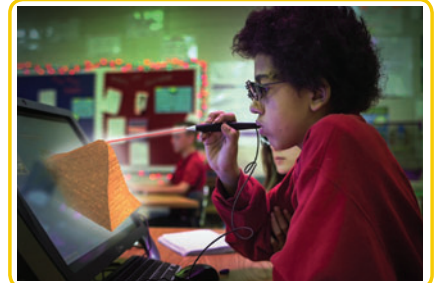
Cherry Hill Campus, Upper School

The Upper School offers:

- Low staff-to-student ratio
- Full-time clinical support
- BCBA on-site
- Consulting psychiatric nurse practitioner
- Weekly, clinician-led social skills class
- Talent show, spring dance and other social activities
- Robotics Team
- YTV production and editing studio
- Extended School Year program (for eligible students)
- Fluency instruction in math and reading
- Social skills club
- Online courses (for eligible students)
- Broadband Fiber Optic Internet with full-time educational technology support
- STEM Instruction with zSpace® virtual reality technology enriches science and other content areas
- School website with personalized homework postings, calendar and tech help desk
- Speech, Language, and Occupational Therapy services
- Canine Good Citizen Dog on campus
- Weekly transition classes for 21st Century Life and Careers with evidence-based curriculum
- Transition Portfolios updated annually with assessments and resume materials
- Dedicated Transition Specialist oversees transition planning and guidance
- School-to-work experiences
- Junior Achievement partnership
- Driving Simulator and DriveFocus®
- Instruction for New Jersey's written driver's test (for eligible students)
- Community-based mobility training
- Interscholastic soccer and basketball
- Special Olympics for floor hockey and softball
- Parent information and education workshop series



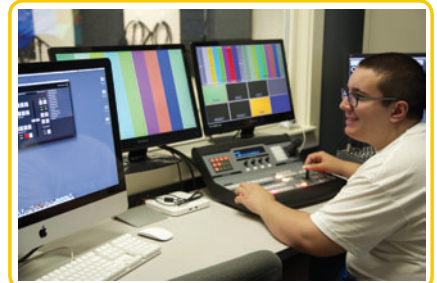
Intensive social skills instruction develops interaction and collaboration



Virtual Reality technology enhances learning



Social Skills clubs and activities including computers, art, music, fitness, intramural sports and more



Work experiences for career exploration

Y.A.L.E. High School Scholars Program:

In cooperation with Camden County College, Y.A.L.E. high school juniors take the entrance exam for college students. Those who pass and qualify for college classes can participate in the Y.A.L.E. High School Scholars Program. As seniors, participants take 1 college course per semester at Camden County College helping them gain valuable understanding of the academic requirements and social expectations of college.

...Where evidence-based learning and compassion come together.



facebook.com/yaleschoolnj



@yaleschoolnj



@yaleschoolnj



linkedin.com/company/yaleschoolnj